



LEAF



STANDARD EQUIPMENT

NISSAN LEAF STANDARD SPECIFICATION:

EXTERIOR:

- LED signature daytime running lights
- LED signature tail lights
- Body coloured door mirrors with integrated LED indicators
- Chrome door handles
- Illuminated charging port

INTERIOR:

- Height adjustable driver seat
- 60:40 split folding rear seats
- Front centre console and armrest
- D-shaped leather steering wheel
- Remote audio control

COMFORT & CONVENIENCE:

- Nissan i-Key
- Start push button
- Blind Spot Warning
- Air conditioning
- Intelligent Auto headlights with follow me-home functionality & auto hazard lights
- High Beam Assist
- Telescopic steering wheel

- Auto-wipers

- Intelligent Cruise Control
- Speed limiter
- Front and rear electric windows
- Front and rear USB ports

AUDIO & TECHNOLOGY:

- 7" TFT screen combimeter
- 8" touchscreen entertainment system
- AM/FM/DAB audio system
- e-Pedal (with regenerative function)
- Android™ Auto and Apple™ CarPlay

SAFETY:

- ABS with EBD and Brake Assist
- Hill Start Assist
- Driver, passenger, side and curtain airbags
- ISOFIX child seat anchorage points (rear)
- Intelligent Trace Control
- Intelligent Emergency Braking with Pedestrian Recognition
- Lane Departure Warning
- Intelligent Lane Intervention
- Rear Cross Traffic Alert
- Blind Spot Warning
- Thatcham alarm system

OPTIONAL EXTRAS

- Metallic paint
- Pearlescent paint
- 3 pin EVSE 6m charging cable

ACENTA

IN ADDITION TO STANDARD EQUIPMENT

EXTERIOR:

- 16" black alloy wheels
- Front fog lights

AUDIO & TECHNOLOGY:

- 6 speakers
- Rear view camera

CHARGING:

- 39kWh usable battery capacity
- 50kW CHAdeMO rapid charging capability
- 6.6kW on-board charger
- Mode 3 Type 2 6m charging cable

OPTIONAL EXTRAS

- Spare Wheel
- Tech Pack: Intelligent Around View Monitor, Moving Object Detection, Intelligent Driver Alert, front and rear parking sensors
- Heat Pack: Heated front seats with heated steering wheel
- 3 pin EVSE 6m charging cable



N-CONNECTA

IN ADDITION TO ACENTA

EXTERIOR:

- 17" black alloy wheels
- Rear privacy glass
- Electric folding door mirrors
- Gloss black B-pillar

INTERIOR:

- Synthetic part leather / part cloth trim
- Gloss Black interior trim
- Heat Pack: Heated front seats with heated steering wheel

COMFORT & CONVENIENCE:

- Anti dazzle rear view mirror
- Dual zone climate control (remote heating and cooling)
- NissanConnect Navigation and Entertainment System with NissanConnect Services app integration
- Heat pump

AUDIO & TECHNOLOGY:

- Tech Pack: Intelligent Around View Monitor, Moving Object Detection, Intelligent Driver Alert, front and rear parking sensors

OPTIONAL EXTRAS

- LED Pack: Full LED headlights and LED foglights with cornering function
- Spare Wheel
- ProPILOT Pack: Traffic Jam Pilot, Lane Keep Assist, Electronic Parking Brake
- Two-tone paint
- Intelligent rear view mirror
- 3 pin EVSE 6m charging cable



TEKNA

IN ADDITION TO N-CONNECTA

EXTERIOR:

- LED Pack: Full LED headlights and LED foglights with cornering function

INTERIOR:

- Black part leather, part synthetic leather trim, with Ultrasuede inserts
- Front and rear heated seats with heated steering wheel

AUDIO & TECHNOLOGY:

- Bose premium audio system with 7 speakers
- ProPILOT: Traffic Jam Pilot, Lane Keep Assist, Electronic Parking Brake

OPTIONAL EXTRAS

- Spare Wheel
- ProPILOT Park
- Two-tone paint
- Intelligent rear view mirror
- 3 pin EVSE 6m charging cable



e+ N-CONNECTA

IN ADDITION TO N-CONNECTA

EXTERIOR:

- Revised suspension set-up

TECHNOLOGY:

- Power output of 217PS with 340Nm torque
- 239 mile range

CHARGING:

- 59kWh usable battery capacity

OPTIONAL EXTRAS

- LED Pack: Full LED headlights and LED footlights with cornering function
- Spare Wheel
- ProPILOT Pack: Traffic Jam Pilot, Lane Keep Assist and Electronic Parking Brake
- Two-tone paint
- Intelligent Rear View Mirror
- 3 pin EVSE 6m charging cable

e+ TEKNA

IN ADDITION TO TEKNA

EXTERIOR:

- Revised suspension set-up

TECHNOLOGY:

- Power output of 217PS with 340Nm torque
- 239 mile range

CHARGING:

- 59kWh usable battery capacity

OPTIONAL EXTRAS

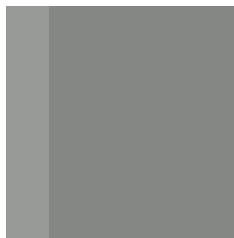
- Spare Wheel
- ProPILOT Pack
- Two-tone paint
- Intelligent rear view mirror
- 3 pin EVSE 6m charging Cable



COLOURS



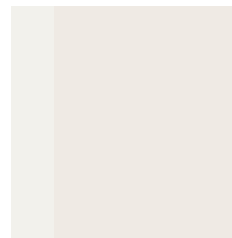
FLAME RED (Z10)
SOLID



GUN METALLIC (KAD)
METALLIC



PEARL BLACK (Z11)
METALLIC



STORM WHITE (QAB)
PEARLESCENT



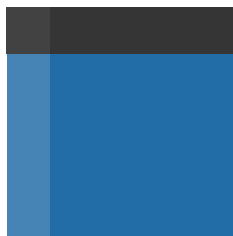
PEARL BLUE (RCJ)
PEARLESCENT



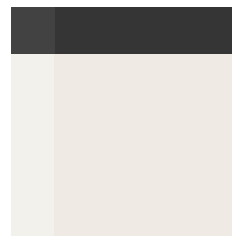
MAGNETIC RED (XDS)
AVAILABLE **ONLY** WITH
TWO-TONE PEARL BLACK ROOF
METALLIC



BLADE SILVER (XDR)
AVAILABLE **ONLY** WITH
TWO-TONE PEARL BLACK ROOF
METALLIC



MAGNETIC BLUE (XFV)
AVAILABLE **ONLY** WITH
TWO-TONE PEARL BLACK ROOF
PEARLESCENT



STORM WHITE (XDF)
AVAILABLE WITH TWO-TONE PEARL
BLACK ROOF
PEARLESCENT



CERAMIC GREY (XFU)
AVAILABLE **ONLY** WITH
TWO-TONE PEARL BLACK ROOF
PEARLESCENT

Two-Tone Paint colour options available
from N-Connecta grade.

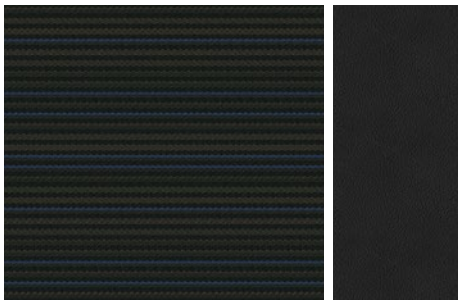
TRIMS

ACENTA



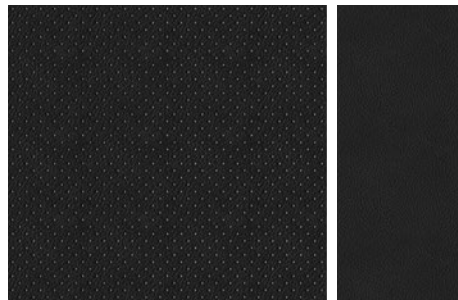
Black woven fabric

N-CONNECTA / e+ N-CONNECTA



Black part synthetic leather / part cloth

TEKNA / e+ TEKNA



Black part leather, part synthetic leather trim, with Ultrasuede inserts

WHEELS

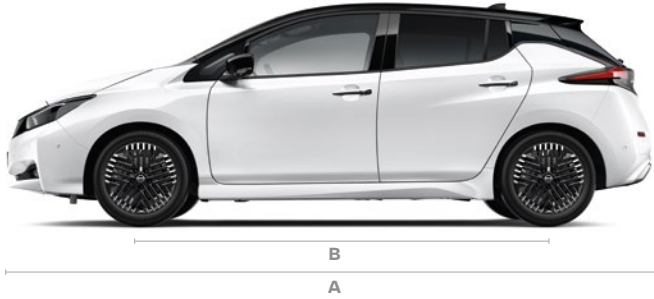


ACENTA 16" BLACK ALLOY WHEEL



N-CONNECTA, TEKNA,
E+ N-CONNECTA & E+ TEKNA
17" BLACK ALLOY WHEEL

DIMENSIONS



- A:** Overall length: 4,490mm
- B:** Wheelbase: 2,700mm
- C:** Overall width: 2,030mm
- D:** Overall height: 1,540mm



WARRANTY

Nissan LEAF offers you:

- 5 years / 60,000 miles warranty on all EV dedicated components and 3 years / 60,000 miles for standard components
- 12 Year anti-corrosion warranty
- 18,000 miles service interval

Nissan LEAF Lithium-Ion battery warranty also protects against capacity loss below 9 bars of capacity (out of 12) as shown on the LEAF's capacity gauge. For a period of 8 years / 100,000 miles

LEAF TECHNICAL DATA

		ACENTA	N-CONNECTA	TEKNA	e+ N-CONNECTA	e+ TEKNA
MODEL						
Engine type		Electric Motor	Electric Motor	Electric Motor	Electric Motor	Electric Motor
Drivetrain		2WD	2WD	2WD	2WD	2WD
Seating capacity		5	5	5	5	5
Overall Length	mm	4490	4490	4490	4490	4490
Overall Width without mirrors	mm	1788	1788	1788	1788	1788
Overall Width with mirrors	mm	2030	2030	2030	2030	2030
Overall Height (unladen)	mm	1530	1540	1540	1545	1545
Kerb Weight min / max	kg	1580 - 1640	1580 - 1640	1580 - 1640	1709 - 1726	1709 - 1726
Gross Vehicle Weight	kg	1995	1995	1995	2140	2140
Maximum payload	kg	450	450	450	450	450
Maximum roof load	kg	35	35	35	35	35
Wheelbase	mm	2700	2700	2700	2700	2700
Overhang, front/rear	mm	1005 / 785	1005 / 785	1005 / 785	1005 / 785	1005 / 785
Track front	mm	1540 / 1530	1540 / 1530	1540 / 1530	1540 / 1530	1540 / 1530
Track rear	mm	1555 / 1545	1555 / 1545	1555 / 1545	1555 / 1545	1555 / 1545
Turning circle, kerb to kerb	m	10.6	11.0	11.0	11.0	11.0
Luggage capacity (without parcel shelf)	litres	435	435	420	435	420
Luggage capacity (with parcel shelf)	litres	400	400	385	400	385
Luggage/Trunk capacity with folded seats VDA (up to roof)	litres	1176	1176	1161	1176	1161
Luggage space, max length	mm	790	790	790	790	790
Luggage space, max width	mm	1103	1103	1103	1103	1103
Minimum ground clearance	mm	155	155	155	135	135
CHASSIS						
Driven wheels		Front Wheel Drive				
Transmission		Automatic				
Suspension, front		MacPherson strut				
Suspension, rear		Twist beam axle				
Steering		Electric power assisted				
Brakes, front		Vented discs with Twin-piston sliding caliper				
Brakes, rear		Vented discs with single-piston floating caliper				
Battery type		Laminated lithium ion				
Voltage	V	350	350	350	350	350
Battery capacity (usable)	kWh	39	39	39	59	59
Tyre size		205/55R16 91V	215/50R17 91V	215/50R17 91V	215/50R17 91V	215/50R17 91V
Wheel size		6.5 J x 16 16" Alloy	6.5 J x 17 17" Alloy	6.5 J x 17 17" Alloy	6.5 J x 17 17" Alloy	6.5 J x 17 17" Alloy

		ACENTA	N-CONNECTA	TEKNA	e+ N-CONNECTA	e+ TEKNA
PERFORMANCE						
Acceleration	0 - 62mph (0 - 100kph)	7.9	7.9	7.9	6.9	6.9
Max. speed	mph	90	90	90	98	98
Electricity consumption	Wh/km	206	206	206	180	180
Range (WLTP) combined	miles	168	168	168	239	239
Range (WLTP) City	miles	242	242	242	319	319
Max. engine power	Kw/PS/min-1	110kW / 150PS / 3283 - 9795rpm			160kW / 217PS / 4600 - 5800rpm	160kW / 217PS / 4600 - 5800rpm
Max. torque	Nm/min-1	320Nm / 0 - 3283rpm			340Nm / 500 - 4000rpm	340Nm / 500 - 4000rpm

CHARGING						
On-board charger	kW	6.6	6.6	6.6	6.6	6.6
Quick charger capability	kW	50				
Charging Cable	m	Mode 3 (6m)				
6.6kW OBC on 32A Wallbox	Empty warning to 100%	7h30			11h30	11h30
10A EVSE cable on domestic socket	Empty warning to 100%	21h			32h	32h
50kW Quick Charger	20% to 80%	Around 60 minutes*			Around 90 minutes*	Around 90 minutes*

*Time dependent on charging conditions, including charger type and condition, battery temperature as well as ambient temperature at point of use. Indicated rapid charging time requires use of a CHAdeMO rapid charger. The Nissan LEAF is designed to support the majority of journeys in daily life and is equipped with charging safeguards to protect the battery during repeated rapid charging sessions in a short period of time. The time taken for successive rapid charging can take longer if the battery temperature activates the battery safeguarding technology.

PRICE LIST

GRADE	BATTERY	BASIC £	VAT £	TOTAL RETAIL £	ON THE ROAD BEFORE GOVERNMENT GRANT £	GOVERNMENT GRANT £	ON THE ROAD INC. GOVERNMENT GRANT £
Acenta	39kWh	23,700.00	4,740.00	28,440.00	28,495.00	1,500.00	26,995.00
N-Connecta	39kWh	25,366.67	5,073.33	30,440.00	30,495.00	1,500.00	28,995.00
Tekna	39kWh	26,616.67	5,323.33	31,940.00	31,995.00	1,500.00	30,495.00
e+ N-Connecta	59kWh	27,825.00	5,565.00	33,390.00	33,445.00	0.00	33,445.00
e+ Tekna	59kWh	29,075.00	5,815.00	34,890.00	34,945.00	0.00	34,945.00

GRADE	COMPANY CAR TAX DRIVERS ^A					
	BATTERY	P11D VALUE* £	BIK %	MONTHLY£ BIK AT 20%	MONTHLY£ BIK AT 40%	MONTHLY£ BIK AT 45%
Acenta	39kWh	28,440.00	2%	9.48	18.96	21.33
N-Connecta	39kWh	30,440.00	2%	10.15	20.29	22.83
Tekna	39kWh	31,940.00	2%	10.65	21.29	23.96
e+ N-Connecta	59kWh	33,390.00	2%	11.13	22.26	25.04
e+ Tekna	59kWh	34,890.00	2%	11.63	23.26	26.17

^ARepresentative examples only - subject to change. Please seek independent tax advice. *P11D value measured by Total Retail, not OTR before or after Government Grant.

PRICE LIST

	ACENTA	N-CONNECTA	TEKNA	e+ N-CONNECTA	e+ TEKNA	BASIC	VAT	TOTAL RETAIL
Solid Paint (Flame Red)	○	○	○	○	○	0	0	0
Metallic Paint	○	○	○	○	○	479.17	95.83	575.00
Pearlescent Paint	○	○	○	○	○	620.83	124.17	745.00
Two Tone Paint (Surcharge to be added to paint cost)	-	○	○	○	○	291.67	58.33	350.00
Spare Wheel	○	○	○	○	○	162.50	32.50	195.00
Heat Pack: Heated front seats with heated steering wheel	○	●	●	●	●	245.83	49.17	295.00
Tech Pack: Intelligent Around View Monitor, Intelligent Driver Alert, Moving Object Detection, front and rear parking sensors	○	●	●	●	●	375.00	75.00	450.00
LED Pack: Full LED headlights and LED foglights with cornering function	-	○	●	○	●	412.50	82.50	495.00
ProPILOT Pack: Traffic Jam Pilot, Lane Keep Assist and Electronic Parking Brake	-	○	●	○	●	375.00	75.00	450.00
ProPILOT Park	-	-	○	-	○	662.50	132.50	795.00
Intelligent Rear View Mirror	-	○	○	○	○	329.17	65.83	395.00
3 pin EVSE 6m Charging Cable	○	○	○	○	○	245.83	49.17	295.00

Optional - ○ Standard - ●



OUR PROMISE. YOUR EXPERIENCE.



YOU+NISSAN

When you purchase a LEAF from us, we'll look after you - for as long as you own it. **That is our Promise.**



BATTERY QUALITY GUARANTEE

YOU want the reassurance of a functional battery.

NISSAN PROMISE to replace any part of the battery causing capacity loss of below 9 bars (out of 12) within your LEAF's warranty period.



CONTINUOUS EV ROADSIDE ASSISTANCE

YOU want the peace of mind you get from our quality service to go even further.

NISSAN PROMISE to provide you with EV Roadside Assistance for free every time you service your car with us.



HERE FOR YOU

YOU want your problems resolved quickly.

NISSAN PROMISE to propose a resolution to any problem within two working days.

Just call 0330 123 1231.

Please visit nissan.co.uk/ownership. Terms and conditions apply.

YOU+ NISSAN

YOU+NISSAN
OUR PROMISE. YOUR EXPERIENCE.



Nissan. Innovation that excites.

visit our website at: www.nissan.co.uk

Dealer stamp:

Follow Nissan LEAF on:



Every effort has been made to ensure that the content of this publication is correct at the time of going to press (March 2022). This brochure has been produced featuring prototype vehicles exhibited at motor shows. In accordance with the company's policy of continuously improving its products, Nissan International reserves the right to change at any time the specification and the vehicles described and shown in this publication. Nissan dealers will be informed of any such modifications as quickly as possible. Please check with your local Nissan dealer to receive the most up-to-date information. Because of the limitations of the printing processes used, the colours shown in this brochure may differ slightly from the actual colours of the paint and interior trim materials used. All rights reserved. Reproduction in whole or part of this brochure without the written permission of Nissan International is forbidden.

Part Number: 99999-54458. Printed in the UK.